

Homework Assignment 1 (Due 4:15pm, Sep. 5)

(1) **[Linux Setup, 0 points]** If you have not set up your Linux account yet, go to the IT help desk (on the 3rd floor of Sloan) and create an account. Go to EME 205 and log in using your Linux account (see the *tutorial_linux.pdf* in the “Homework” directory) and create a directory for this homework. Download the following file to the directory.

- http://eecs.wsu.edu/~daehyun/teaching/2019_EE466/hw/hw01.zip

You can use the following command to download it into the directory.

- `wget eecs.wsu.edu/~daehyun/teaching/2019_EE466/hw/hw01.zip`

Unzip it.

- `unzip hw01.zip`

Source the following file:

- `source ictools_generic.sh`

You might see a message like “ictools_generic.sh: EDITOR not defined, defaulting to vi.” You can ignore it.

However, if you see an error message like “export: Command not found”, run “bash” and source the file.

Then, source the following file:

- `source synopsys.sh`

You might see a message like “synopsys.sh: adding component "hspice" (ver K-2015.06-SP1)”. You can ignore it.

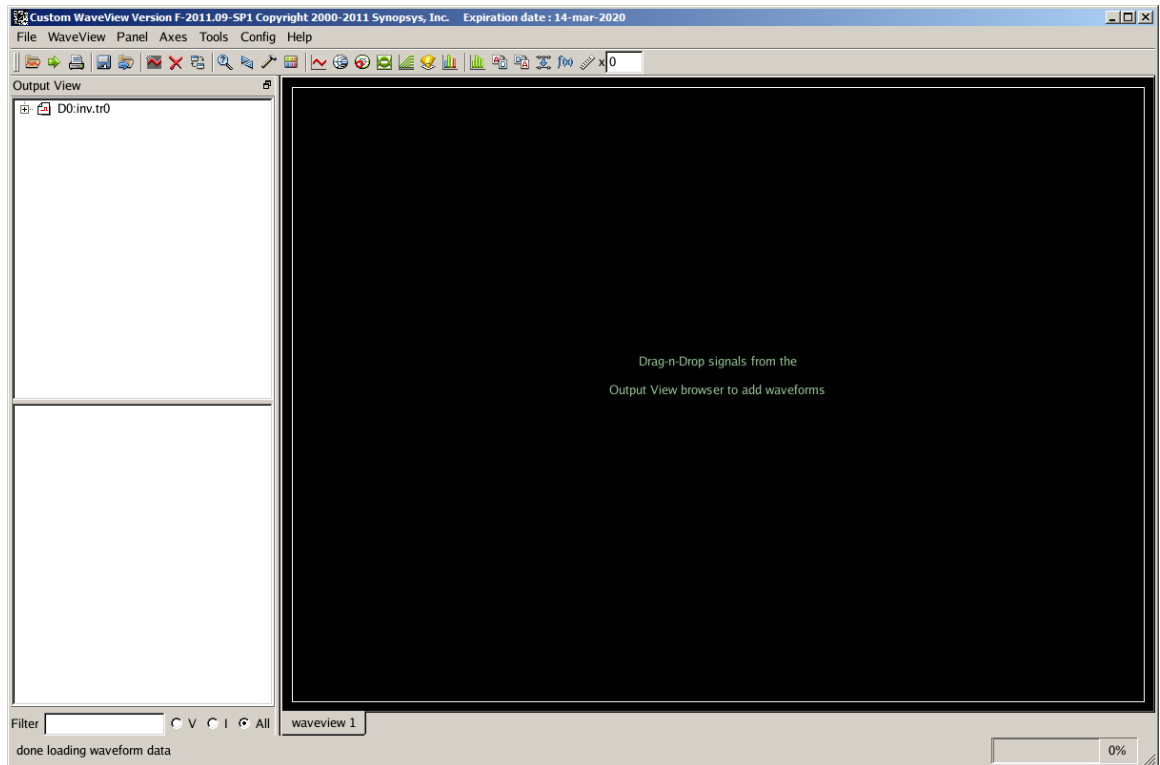
Then, run HSPICE as follows:

- `hspice inv.sp`

You will see a message like “***** hspice job concluded”. If not, you will see a message like “***** hspice job aborted”. This means that the input file has some problems (this won’t happen in this homework though.)

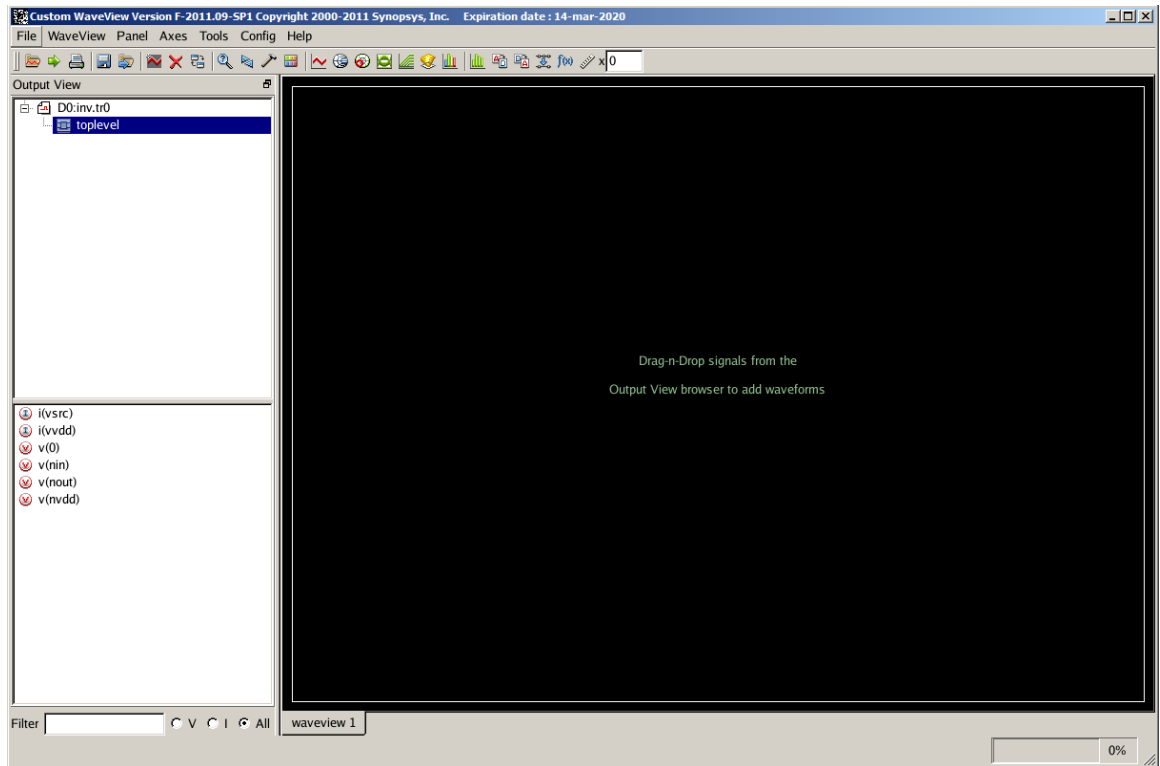
Then, run WaveView.

- `wv inv.tr0`

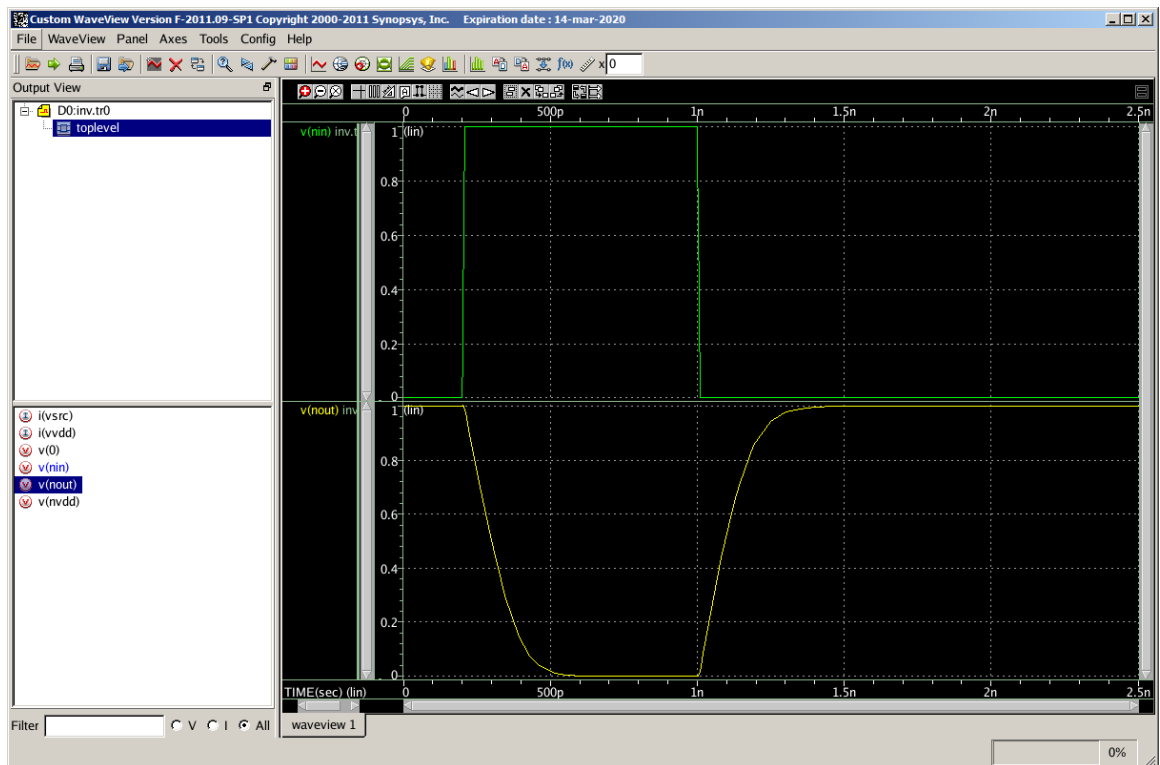


If you don't see this window, it's because you didn't properly set up the GUI environment. See [tutorial_linux.pdf](#) or just go to EME205 and use a Linux desktop in the lab.

Click the “+” button and click “toplevel”.



Double-click “v(nin)” and “v(nout)”.



If you have any problem, contact the TA or email me.