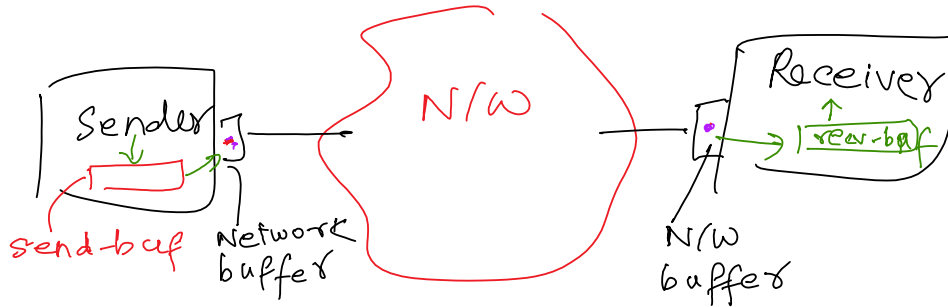
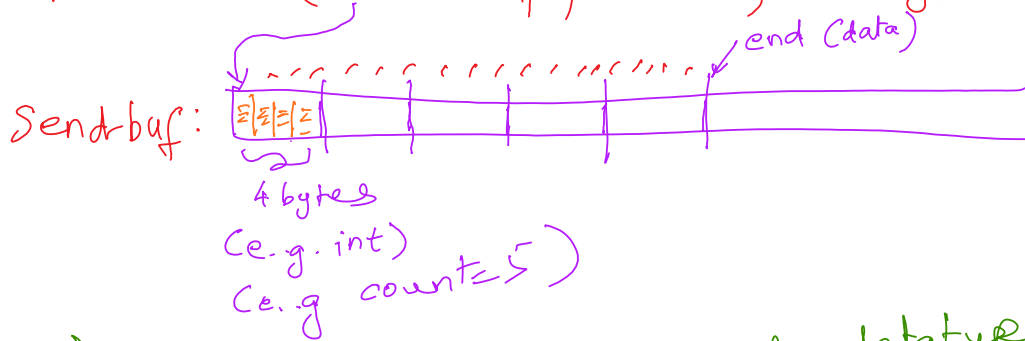


# Point-to-Point Communication: Buffer Structure

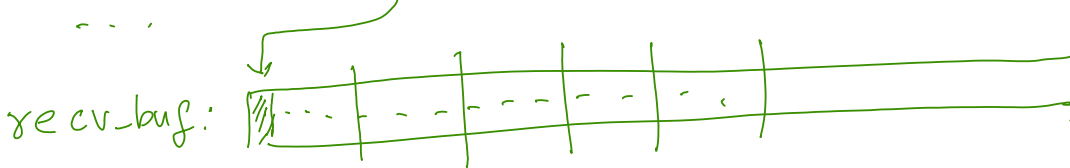


```
MPI_Send ( send_buf, count, datatype, ... )
```



pre-allocated

```
MPI_Recv (recv_buf, count, datatype, ...)
```



// pre-allocated

```
recv_buf = malloc (...)
MPI_Recv (recv_buf, ...)
```

# MPI: Hockney model

Thursday, September 13, 2018 11:59 AM

## Hockney Model:

Network Communication.

cost of "setting up" a connection

$\tau$ : latency (time)

$\mu$ : inverse of the N/W bandwidth

cost of transferring each byte

secs/byte

// #bytes/sec

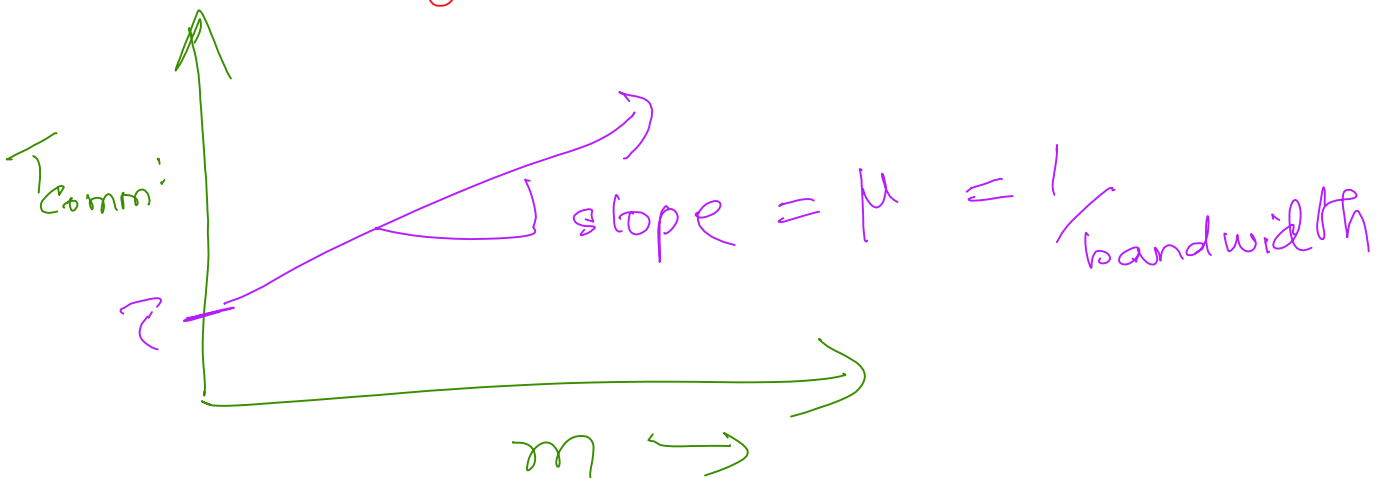
$T(n, b)$  = Computation complexity + communication complexity

Communication Complexity:  $m$  bytes (payload)

$$T_{\text{comm.}} = \tau + \mu m$$

latency                      transfer time

$$y = c + (\text{slope}) x$$

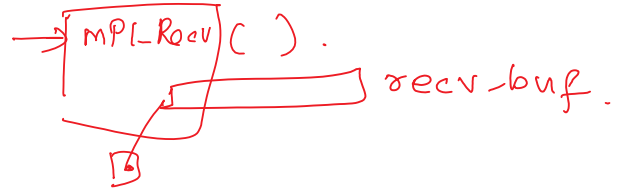
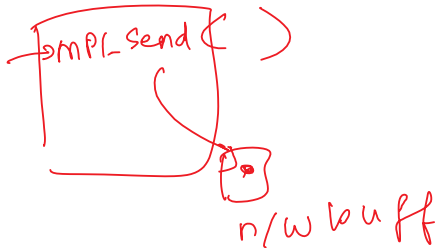


# MPI: Blocking vs. nonblocking

Thursday, September 13, 2018 11:59 AM

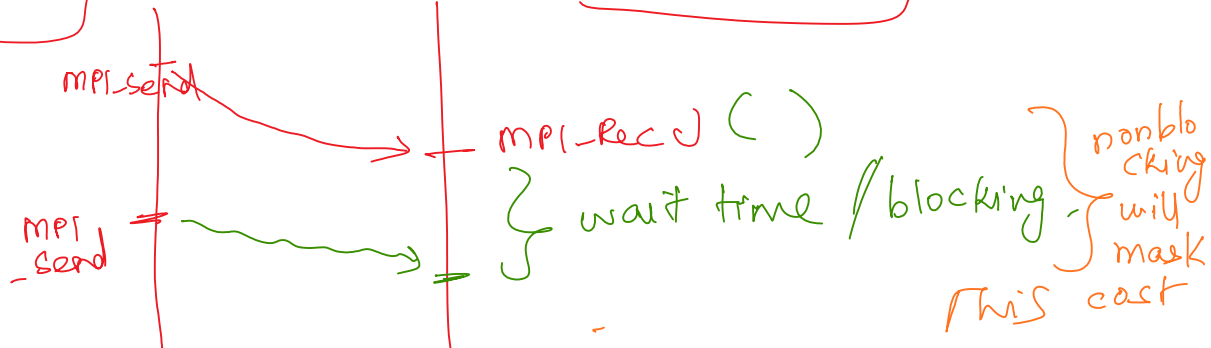
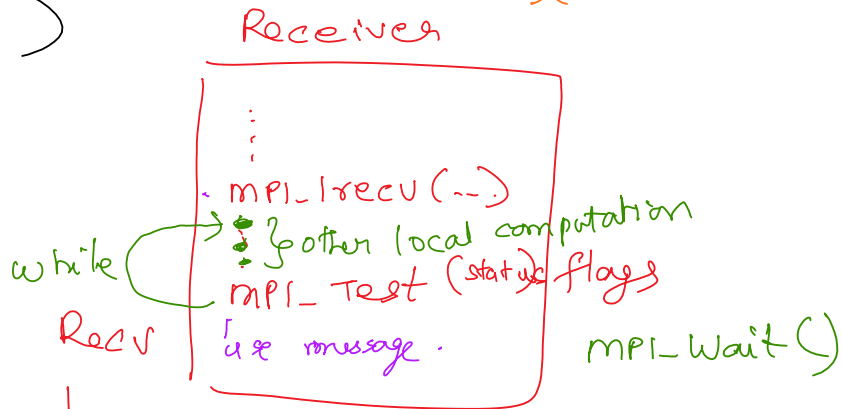
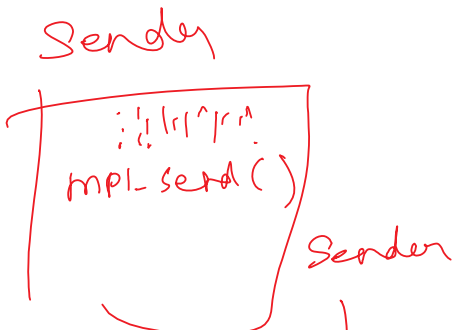
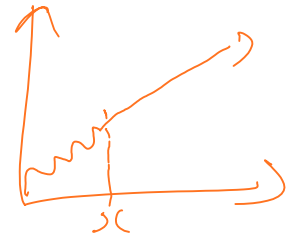
## Blocking Calls;

MPI\_Send, MPI\_Recv are "blocking".



## Nonblocking Calls:

MPI\_Irecv ( - - - )



→ MPI\_Irecv ( - - - ) } ≡ MPI\_Recv ( )  
 → MPI\_Wait ( ) }