

This document describes how you can access the EECS servers that you would need to accomplish your lab assignments.

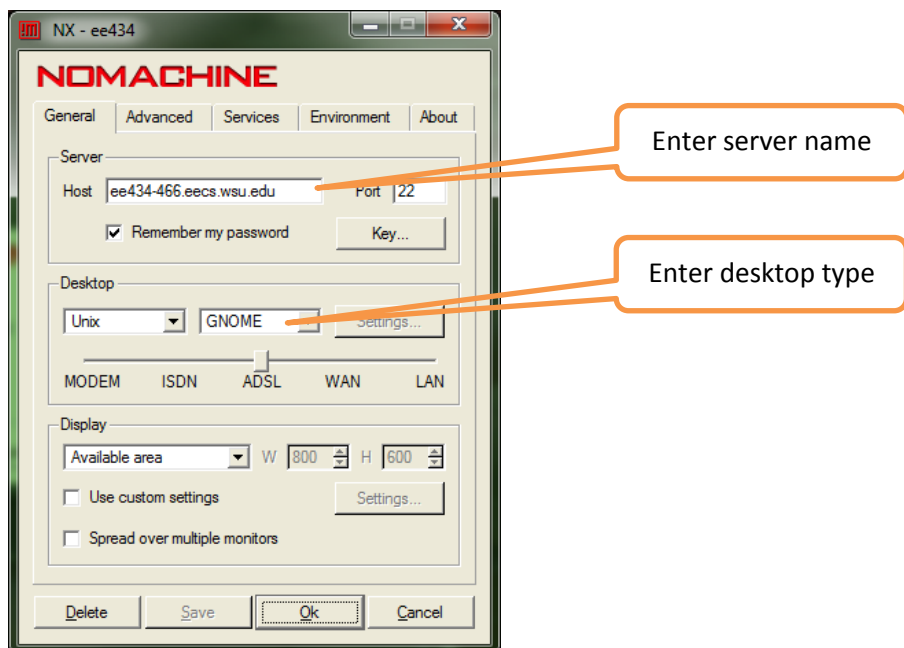
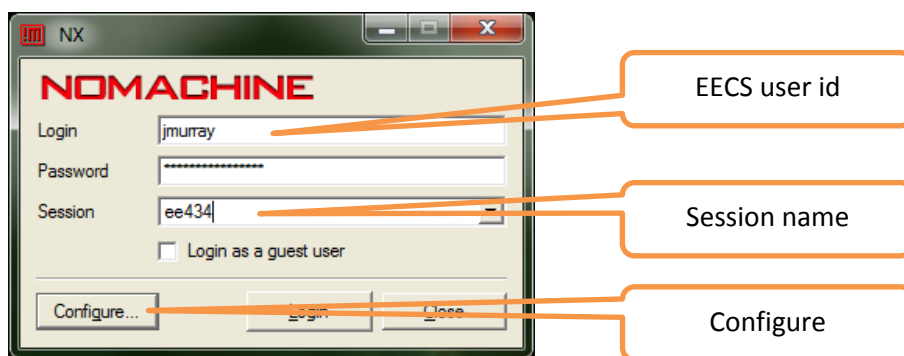
Option 1

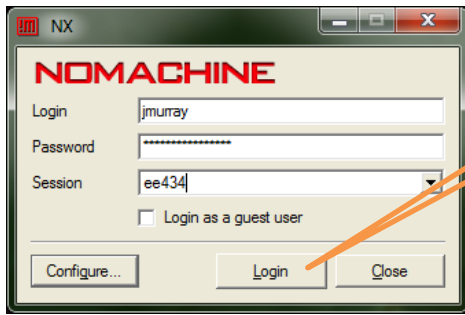
Go to Sloan 353W and work at the thin clients located there.

Option 2

Remote access

1. Download [NXClient for Windows](#) (or [Mac](#)) and install it.
2. Configure NXClient. Steps shown below are for the Windows version.





Login

