

## Homework Assignment 0 (Due 4:10pm, Jan. 23)

(1) **[Linux Setup, 0 points]** If you have not set up your Linux account yet, go to the IT help desk (on the 3<sup>rd</sup> floor of Sloan) and create an account. Go to EME 205 and log in using your Linux account (see the *tutorial\_linux.pdf* in the “Homework” directory) and create a directory for this homework. Download the following file to the directory.

- <http://eecs.wsu.edu/~ee434/Homework/hw00.zip>

You can use the following command to download it into the directory.

- `wget eecs.wsu.edu/~ee434/Homework/hw00.zip`

Unzip it.

- `unzip hw00.zip`

Source the following file:

- `source ictools_generic.sh`

You might see a message like “ictools\_generic.sh: EDITOR not defined, defaulting to vi.” You can ignore it.

However, if you see an error message like “export: Command not found”, run “bash” and source the file.

Then, source the following file:

- `source synopsys.sh`

You might see a message like “synopsys.sh: adding component "hspice" (ver K-2015.06-SP1)”. You can ignore it. If it does not show any message, try the following command:

- `source synopsys.sh hspice`

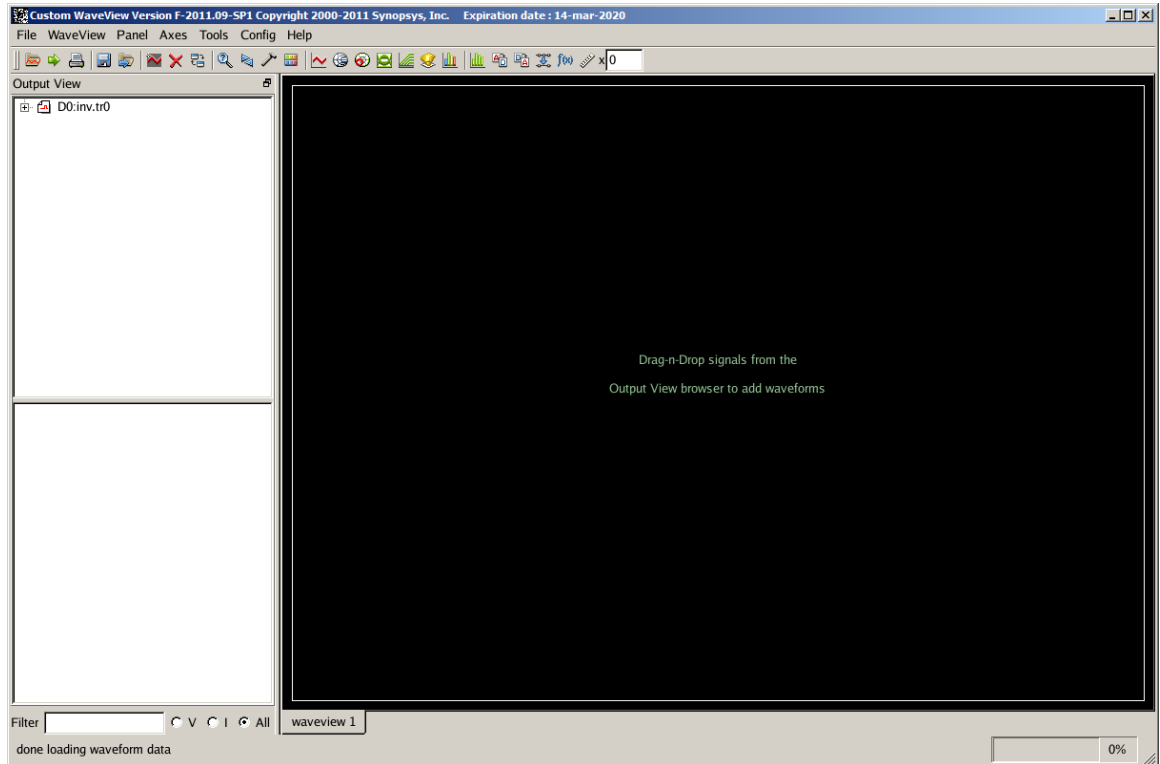
Then, run HSPICE as follows:

- `hspice inv.sp`

You will see a message like “\*\*\*\*\* hspice job concluded”. If not, you will see a message like “\*\*\*\*\* hspice job aborted”. This means that the input file has some problems (this won’t happen in this homework though.)

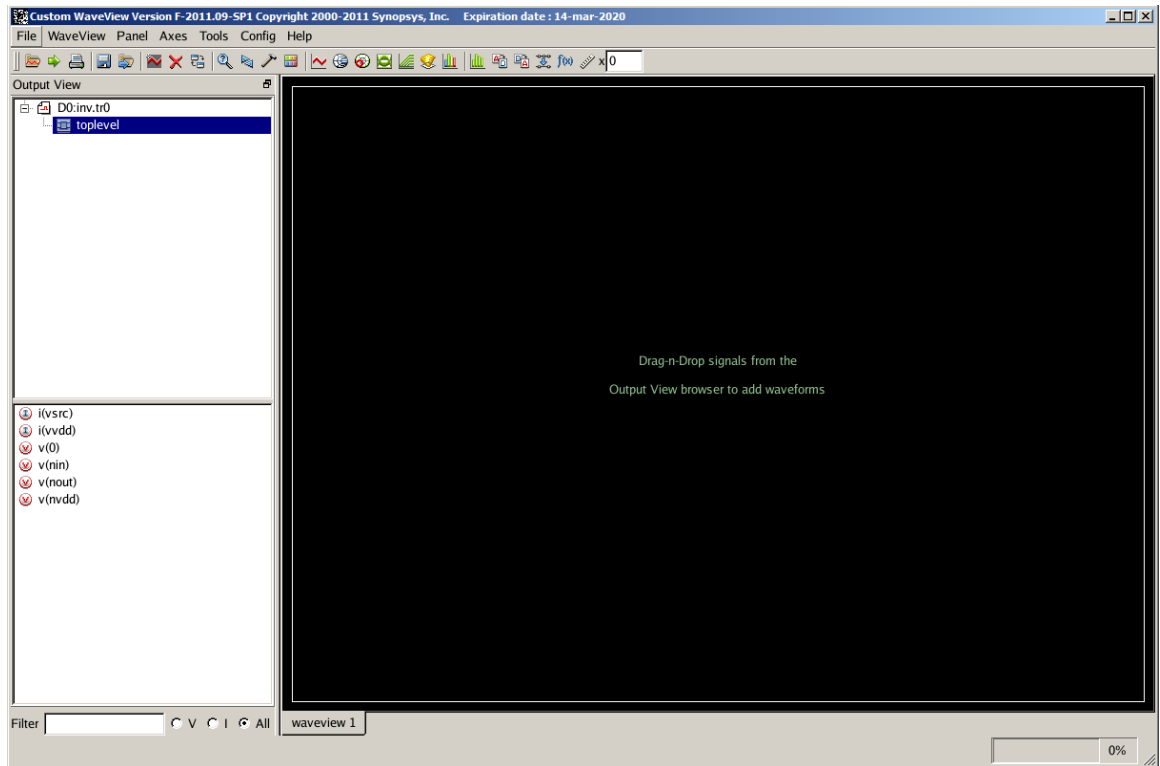
Then, run WaveView.

- `wv inv.tr0`

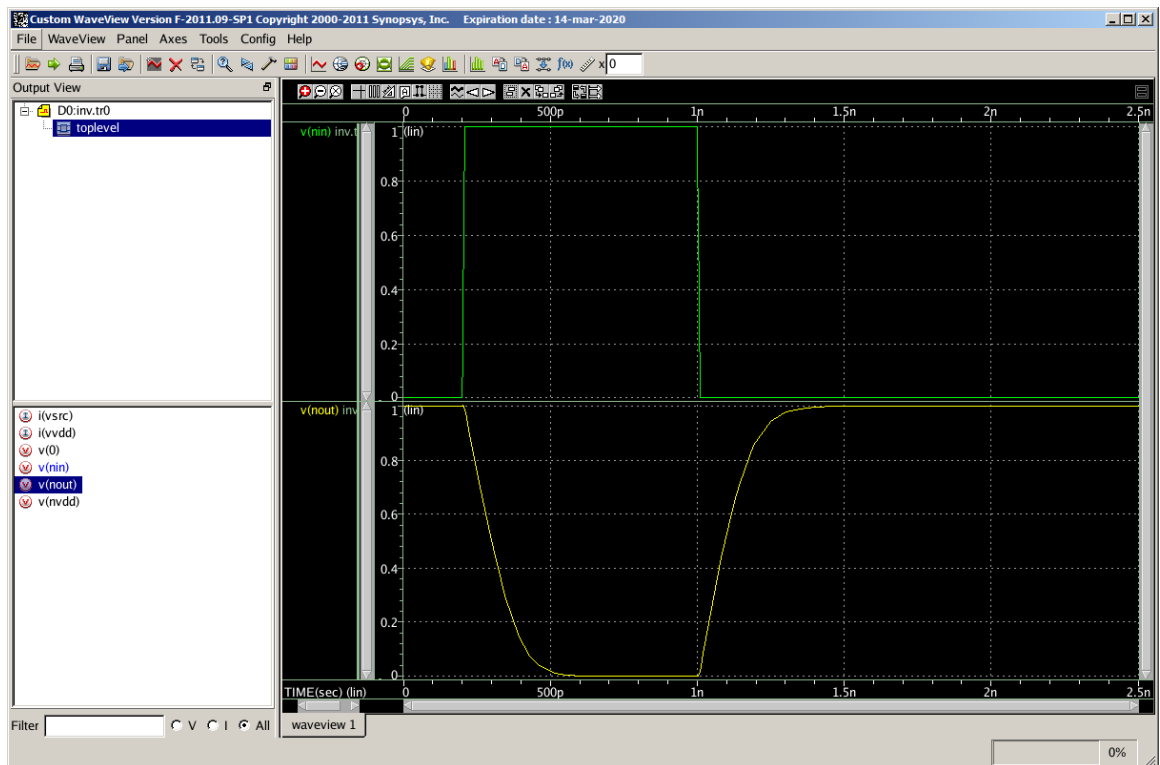


If you don't see this window, it's because you didn't properly set up the GUI environment. See [tutorial\\_linux.pdf](#) or just go to EME205 and use a Linux desktop in the lab.

Click the "+" button and click "toplevel".



Double-click “v(nin)” and “v(nout)”.



If you have any problem, email me.