

Tutorial – Linux

Dae Hyun Kim

EECS

Washington State University

Goal

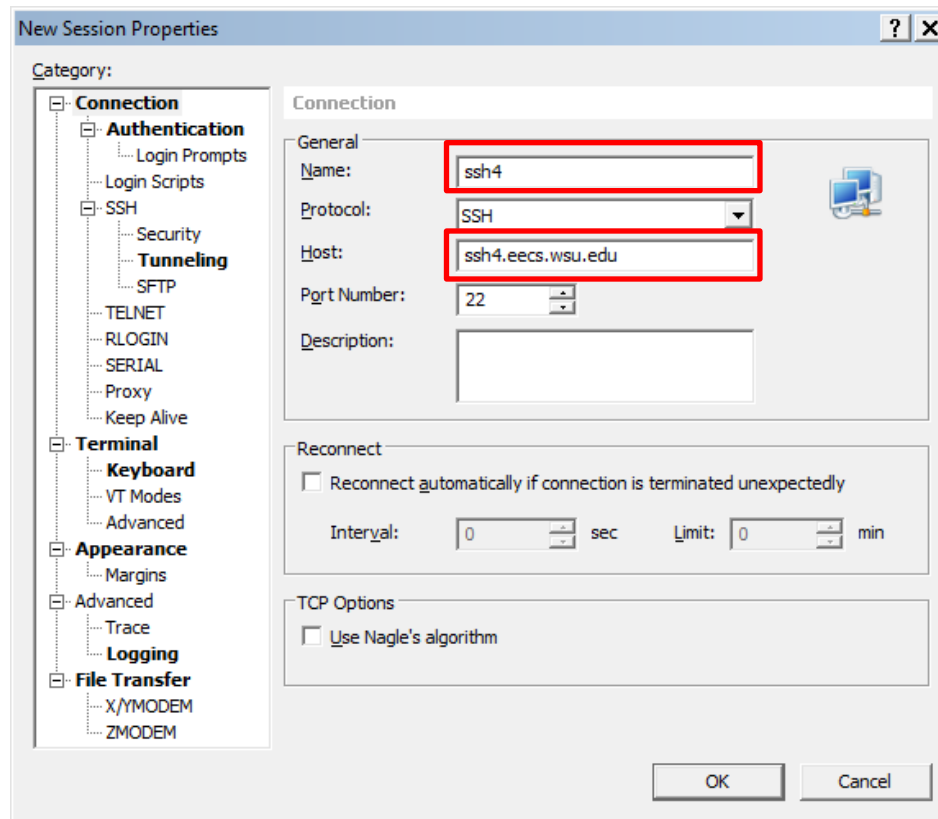
- Learn how to use Linux

For Windows Users

- Download an SSH client program such as
 - PuTTY
 - NetSarang Xshell
 - This is what I am using. It is free.
 - SecureCRT
 - ...
- Download an X server software such as
 - Xming
 - This is what I am using. It is free.
 - This is used only for GUI environments.

Xshell

- Create a session.
- In the “Sessions” window, click “New”.
 - Enter a name for the session and a host (server) address.

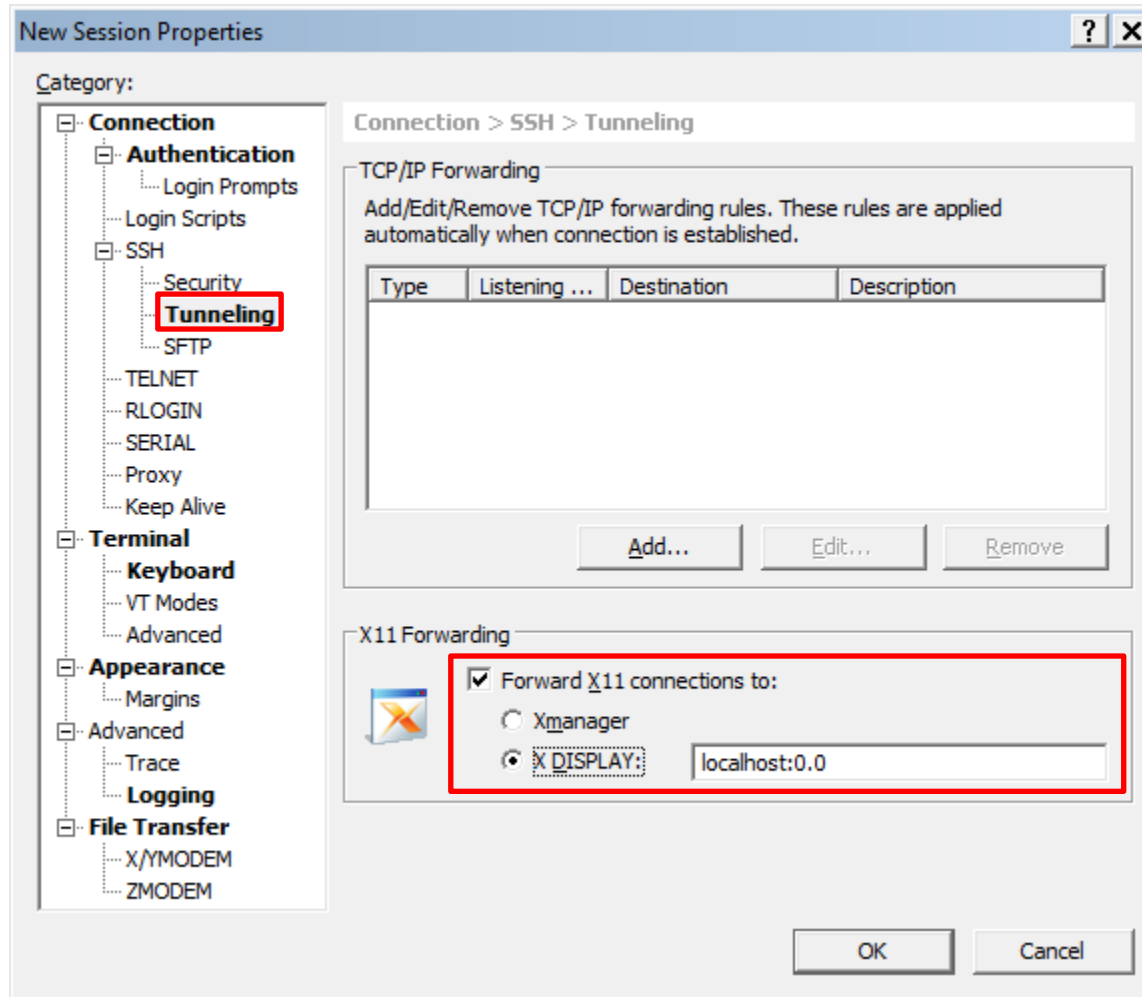


Xshell

- Hosts
 - You can try the following servers.
 - ssh1.eecs.wsu.edu
 - ssh2.eecs.wsu.edu
 - ssh3.eecs.wsu.edu
 - ssh4.eecs.wsu.edu

For Windows Users

- Click “Tunneling” and turn on the “X11 Forwarding” option.



For Windows Users

- Click ok to save the session. From the next time, you can just double-click this session to connect to the server.
- Double-click the session.
 - If you are asked some questions, click “Accept and Save.”
 - Then, enter your EECS ID and password.

```
System Load: 0.02, 0.08, 0.08
System Uptime: 91 days 6 hours 28 min 29 sec
Memory Usage: 63.2%          Swap Usage: 21.3%
Local Users: 10              Whoami: daehyun
Processes: 444

Interface      MAC Address      IP Address
eth0           00:50:56:97:14:8d 69.166.49.161/23

Other ssh hosts available for your use:

ssh -X ssh10

https://support.vcea.wsu.edu/kb/a31/?KBSearchID=55
```

For Windows Users

- Run Xming if you also want to use GUI.
 - If you plan to work in text mode only, you don't need to run Xming.
 - Later on, you will need to run some GUI-based software, so it's better to just run Xming.
- Now, you are ready to work in Linux.

For Linux Users

- Open a terminal.
- Run
 - `ssh -X your_EECS_id@ssh1.eecs.wsu.edu`
 - (ssh1 ~ ssh4 are available)
 - All the commands are case-sensitive. Use `-X` instead of `-x`.
- If you are asked a question, just enter “yes”.
- Enter your EECS account password.
- Now, you are ready to work in the server.

For Mac Users

- For text-mode operations
 - Open a terminal.
 - Click “Launchpad” and type “terminal”.
 - Click the terminal icon.
 - Run
 - `ssh -X your_EECS_id@ssh1.eecs.wsu.edu`
 - Follow the instructions for Linux users in the previous page.
- For GUI operations
 - You will need to install an X-client software such as
 - XQuartz
 - I use this.
 - Then, click XQuartz, “Applications”, and “Terminal.”
 - It will open a terminal supporting X window.
 - Run
 - `ssh -X your_EECS_id@ssh1.eecs.wsu.edu`
 - Follow the instructions for Linux users in the previous page.

Linux Commands

- Create a directory (folder).
 - `mkdir directory_name`
 - ex: `mkdir ee434`

- Go to the directory (`cd`: change directory).
 - `cd directory_name`
 - ex: `cd ee434`

- List all the files in the current directory.
 - `ls -al`

- Zip files
 - `tar cvzf target_file_name.tar.gz file1 file2 ...`
 - ex: `tar cvzf hw1.tar.gz src*.v wv1.out wv3.out`

Linux Commands

- Unzip
 - `tar xvfz filename.tar.gz` (if it is `.tar.gz`)
 - `unzip filename.zip` (if it is `.zip`)
- Delete files (rm: remove)
 - `rm filename`
 - ex: `rm s1.v s2.v t*`
- Delete a directory
 - `rmdir directory_name`

Troubleshooting

- design_vision (Design Compiler)
 - “-bash: design_vision: command not found”
 - Run “/net/ic/tools/synopsys/syn/bin/design_vision” instead of “design_vision” to launch design_vision.